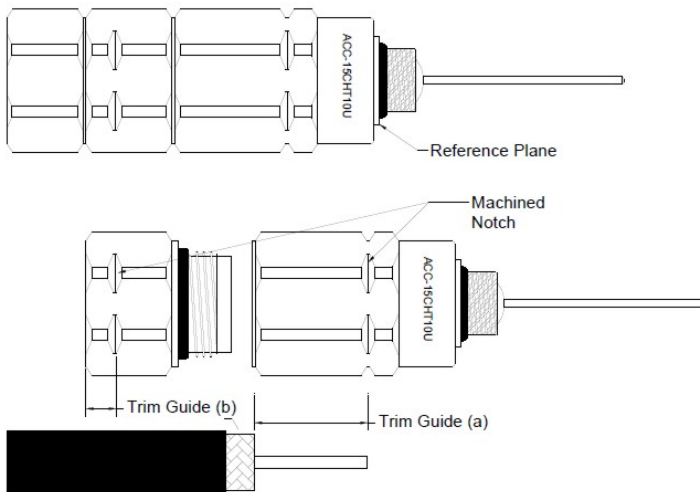


ACC-15CHT10U Flexfeeder Pin Type Connector



TX15 Flexfeeder Pin Type Connector
MDU Product Group
3 - Piece
Truly Non-Rotational Design
Positive Stop Installation
SCTE Compliant
Inner Conductor Trim Guide
Outer Conductor Trim Guide

Material	
Connector Body	Aluminum - 6262 Alloy
Interface Contacts	Brass - Alloys QQQ-B-626
Insulators	Thermally Stable Plastics
O Rings	Ethylene Propylene
Environmental	
Operating Temperature	-40°C to +60°C
Corrosion , Minimum	Bellcore GR-2846-CORE, ATM B117 - 336 Hours
Mechanical	
Standard 5/8-24 UNEF and 3/8-32 Threads	
Mating Cable Retention, lbf (N)	250 (1,112)
Electrical Specifications	
Impedance	75 ∇ 2 Ω
Return Loss @ 1 GHz	-20 dB min
Insertion Loss @ 1 GHz	0.20 dB max
Cable Prem Dimensions	
Inner Conductor Length (a)	1.000 inches / 25.40 mm
Outer Conductor Exposed	0.25 inches / 6.35 mm